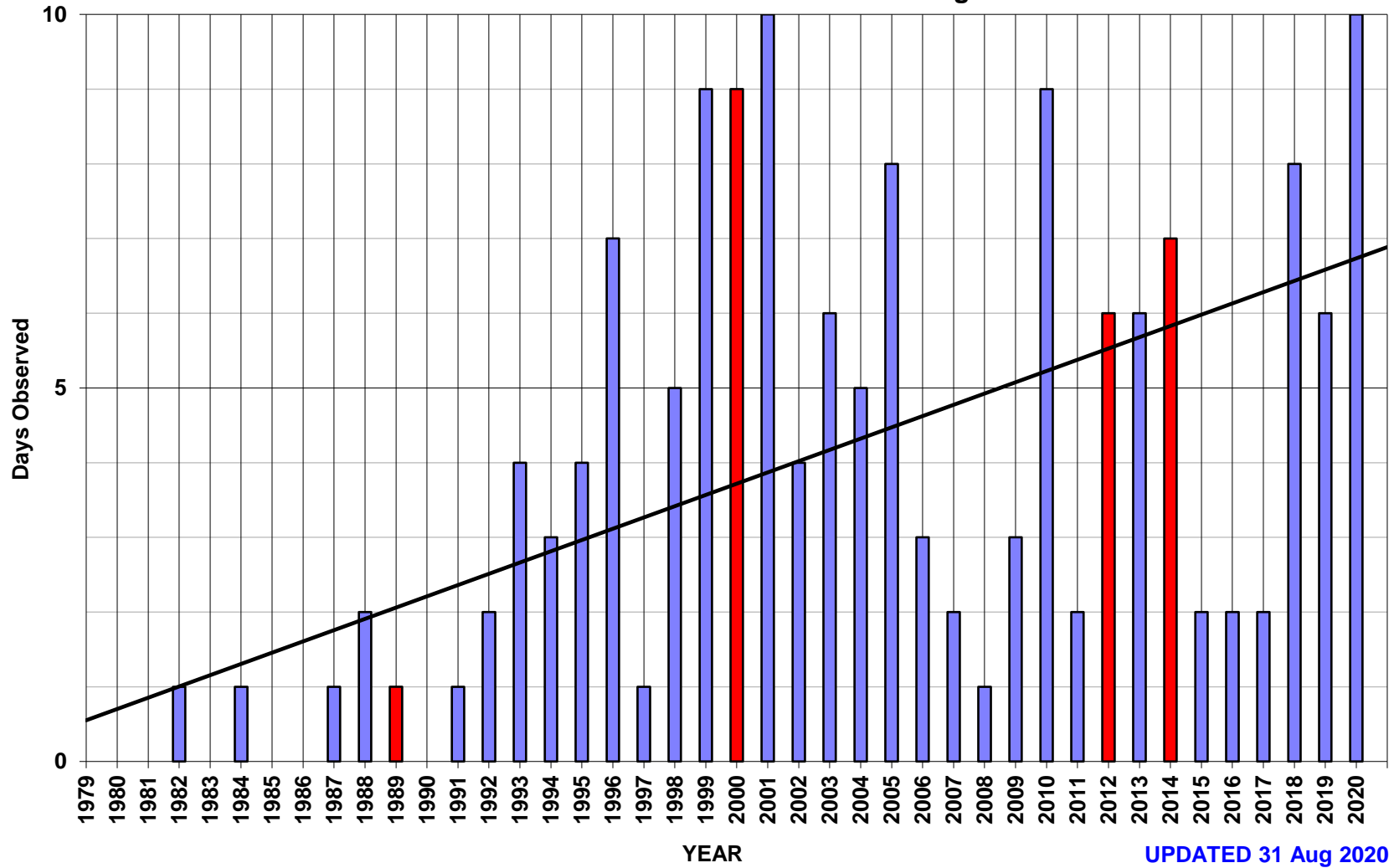


Figure 1c

K6QXY (CM88ql) SUMMER KL7, VY & VE8 2 HOP Paths via 50 MHz Es- Detected By Year

153 TOTAL DAYS OBSERVED 1979 - PRESENT (CYCLE MAX. in RED)

Note: WSJT Detections ≥ -10 are included starting in YEAR 2018



Compare to Figs. 1a and 1b