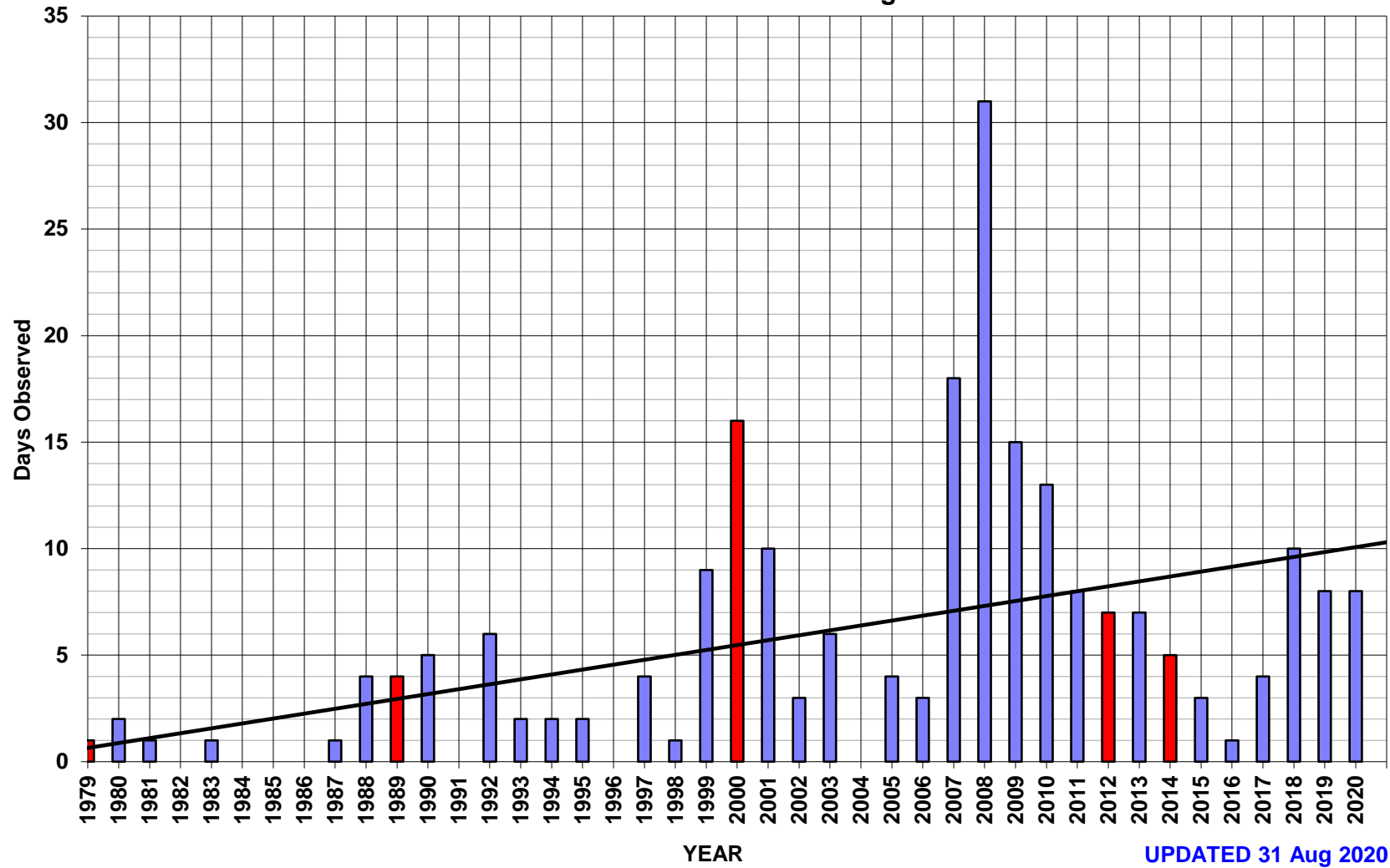


Figure 1c

K6QXY (CM88ql) SUMMER KH6 2 HOP Path via 50 MHz Es- Detected By Year

225 TOTAL DAYS OBSERVED 1979 - PRESENT (CYCLE MAX. in RED)

Note: WSJT Detections \geq -10 are included starting in YEAR 2018



Compare to Figs. 1a and 1b